

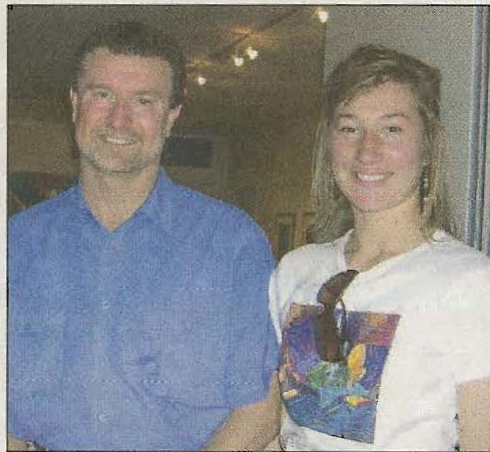
From left: Nikki Housey, Bianca Katz, Sherrie Gelberg, Karen Cave, Jackie Nery.

JMA launch

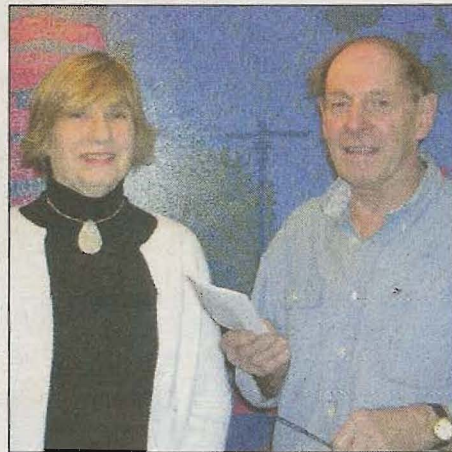
Don Henry, executive director of the Australian Conservation Foundation, launched Rachel Rovay's exhibition *Sense of Place II* at the Jewish Museum of Australia on March 20.



From left: John Hipwell, Simone Rosel, Rachel Rovay.



Don Henry, Natasha Vagner.



Catherine Tate, Andrew Sibley.



From left: Hani Kestenber, Frida and Martin Gelberg.

McKinnon goes formal



McKinnon Secondary College Year 11 students (from left) Melissa Gocs, Nicole Furman, Jackie Lewin, Jessica Meisels, Lena Elkman and Lisa Hochberg ready to party at the school formal held on March 23 at the International of Brighton.