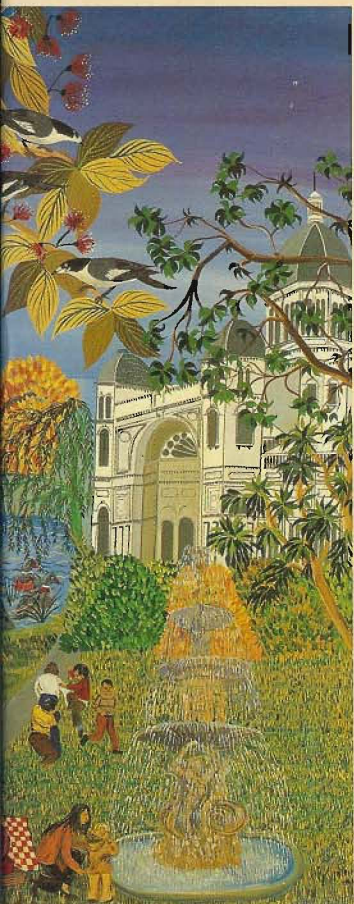


ARTISTS & GALLERIES of Australia

Volume Two



Robert Pepp

Max Germaine

THIS
ENLA
TWO
BIOG
ABO
SCUI
CRA
ADM
250
WEL
730
COM

'Has
art r
—
Sc
A
C

'Th
Azz
ent
van
eve
leri
suc
wit
giv
res
rai
tic
to
Th
ur
re

'T
c
p
w
r
l

Pinacotheca Gallery 1985; Gallery Max Honigsberg 1988.

Awards BMI Bequest, Wollongong 1981; Warrnambool Art Prize 1984.

Represented Institutional and private collections in UK, Europe, USA, Australia.

ROTH, Marianne (Freund) VIC

Born Germany 1926. Painter, sculptor, printmaker and teacher.

Studies Breslau and Berlin Germany; Caulfield Institute of Technology 1953; 1974–82 (part-time); Diploma of Arts and Crafts from Mercer House Teachers College, Melbourne; Taught art at Camberwell Girls Grammar, Shelford, Sacred Heart, Oakleigh and for 19 years at PLC Burwood, Vic; Member VAS, Malvern Art Society and Bezalel Fellowship of Arts; Overseas study tours 1974, 1978, 1981.

Exhibitions Joint showing at Eckersley Gallery, Prahran 1980; Regular shows with VAS.

Represented Private collections in New York, UK, Europe and Australia.

ROTHLISBERG, Victoria QLD

Born San Diego USA 1945. Paintings, collage, textiles.

Studies Qld C of A, BA and Dip. Fine Art, Uni. of Northern Arizona, USA; Grossmont Community College, California.

Exhibitions Solo shows at Homestead Gallery, Capalaba Qld 1981; Dabbles on Days, Brisbane 1984; Windaroo Gallery 1985; Mellersh Gallery, Qld 1986; Olympia, Washington USA 1987; Nakina Fine Art, Qld 1988. Numerous group shows. **Awards** Beenleigh 1984; Redlands 1976, 80.

Represented Institutional and private collections in USA and Australia.

ROUGHSEY, Lindsay QLD

Aboriginal painter in Cape York Peninsula and Mornington Island area; Paints under the name of *Burud*; Brother of Dick Roughsey.

Exhibitions Age Gallery, Melbourne November 1978.

ROUND, Michele TAS

Awards Randwick Historical Art Award 1982.

ROVAY, Rachel VIC

Born Jerusalem 1955. Painter. Arrived Aust. 1970. **Studies** Chisholm IT — Diploma, Art and Design 1977; Diploma of Education 1980. Visited Israel 1982.

Exhibitions Solo shows at Clive Parry Gallery 1979; Profile Gallery 1985; Realities, Melb. 1988; Holdsworth, Sydney 1989.

Represented Institutional and private collections in Israel and Australia.

ROWBOTHAM, Marjory WA

Born Vic 1923. Painter in all media and teacher; Daughter of Walter Rowbotham.

Studies Diploma in Commercial Art and Art Teachers Diploma from Perth Technical College; National Diploma in Design from Wimbledon School of Art, London UK; Taught art at Perth Technical College for 21 years; Exhibited in father and daughter shows in Perth.

Awards Albany 1973, 1975, 1976, 1978; Bunbury 1973, 1975; Manjimup 1973, 1975, 1977, 1979.

Represented Royal Perth Hospital and private collections in UK, Europe and Australia.

ROWE, Cybele NSW

Born Sydney 1963. Painter, ceramic sculptor. **Studies** BA Visual Arts, City Art Institute 1982–88; Grad. Dip. 1987; Life drawing under Marie Santry 1981–88 with Northwood Drawing Group; Studied UK, Europe, USA 1988.

Exhibitions Blaxland Galleries 1986–89; Sydney Textile Museum 1987; Cooper Gallery 1987; Barry Stern Galleries 1989; Artarmon Galleries 1988.

Awards Aust. Arts Council Travelling Scholarship 1987.

Represented Institutional and private collections.

ROWE, Jim VIC

Born London UK 1931, arrived Australia 1960. Illustrator and sculptor.

Studies Diploma of Art (book illustration) from Kingston Art School, London UK; Worked for some years in Visual Aids Section of PMG Dept, Melbourne; Study tour to Europe 1972.